



SAXON SHORE
— ESTATE AGENTS —



28 Cyprus Road, Faversham, ME13 8HB **Offers in excess of £275,000**

Introducing this three bedroom, mid-terrace house on Cyprus Road in Faversham. Located close to the recreation ground and local amenities, and within walking distance of the town centre and train station.

Accommodation spans across two floors and comprises a lounge with working wood burner, a dining room, a modern kitchen, and a full bathroom to the ground floor.

Upstairs are two double bedrooms and a third bedroom ideal for a single bed or as a study.

Outside to the rear is a walled, courtyard garden.

Don't miss your chance to make this house your new home, contact us to arrange a viewing!

Lounge

12'3" x 10'9" (3.74 x 3.29)



Bedroom 3

6'5" x 8'10" (1.97 x 2.7)

Dining Room

12'3" x 10'1" (3.74 x 3.08)



Kitchen

6'5" x 8'10" + 7'10" x 2'11" (1.97 x 2.7 + 2.41 x 0.89)



Garden



Bathroom

5'7" x 7'6" (1.72 x 2.31)



Bedroom 1

12'3" x 10'9" (3.74 x 3.29)

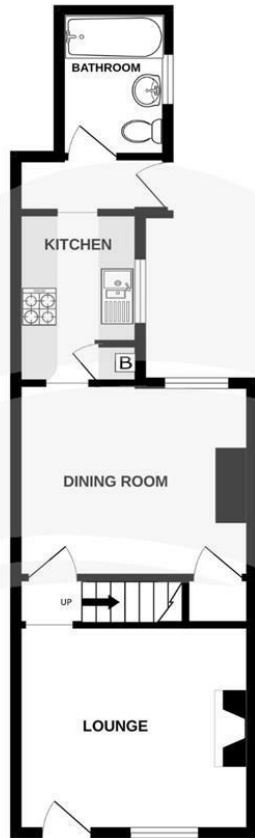


Bedroom 2

12'3" x 10'1" (3.74 x 3.08)

GROUND FLOOR
36.9 sq.m. (397 sq.ft.) approx.

1ST FLOOR
31.0 sq.m. (333 sq.ft.) approx.



TOTAL FLOOR AREA : 67.8 sq.m. (730 sq.ft.) approx.

Whilst every attempt has been made to ensure the accuracy of the floorplan contained here, measurements of doors, windows, rooms and any other items are approximate and no responsibility is taken for any error, omission or mis-statement. This plan is for illustrative purposes only and should be used as such by any prospective purchaser. The services, systems and appliances shown have not been tested and no guarantee as to their operability or efficiency can be given.
Made with Metropix. ©2025

Energy Efficiency Rating		Current	Potential
Very energy efficient - lower running costs			
(92 plus) A			89
(81-91) B			
(69-80) C			
(55-68) D			
(39-54) E			
(21-38) F			
(1-20) G			
Not energy efficient - higher running costs			
England & Wales		EU Directive 2002/91/EC	

Environmental Impact (CO ₂) Rating		Current	Potential
Very environmentally friendly - lower CO ₂ emissions			
(92 plus) A			
(81-91) B			
(69-80) C			
(55-68) D			
(39-54) E			
(21-38) F			
(1-20) G			
Not environmentally friendly - higher CO ₂ emissions			
England & Wales		EU Directive 2002/91/EC	

